



**COMMONWEALTH OF KENTUCKY
TRANSPORTATION CABINET**
Frankfort, Kentucky 40622
www.transportation.ky.gov/

Matthew G. Bevin
Governor

Greg Thomas
Secretary

December 2, 2016

CALL NO. 201
CONTRACT ID NO. 161057
ADDENDUM # 1

Subject: Magoffin-Morgan Counties, 121GR16D057-NHPP
Letting December 9, 2016

(1) Revised - Plans - Sheet S14

Proposal revisions are available at <http://transportation.ky.gov/Construction-Procurement/>.

Plan revisions are available at <http://www.lynnimaging.com/kytransportation/>.

If you have any questions, please contact us at 502-564-3500.

Sincerely,

A handwritten signature in cursive script that reads "Rachel Mills".

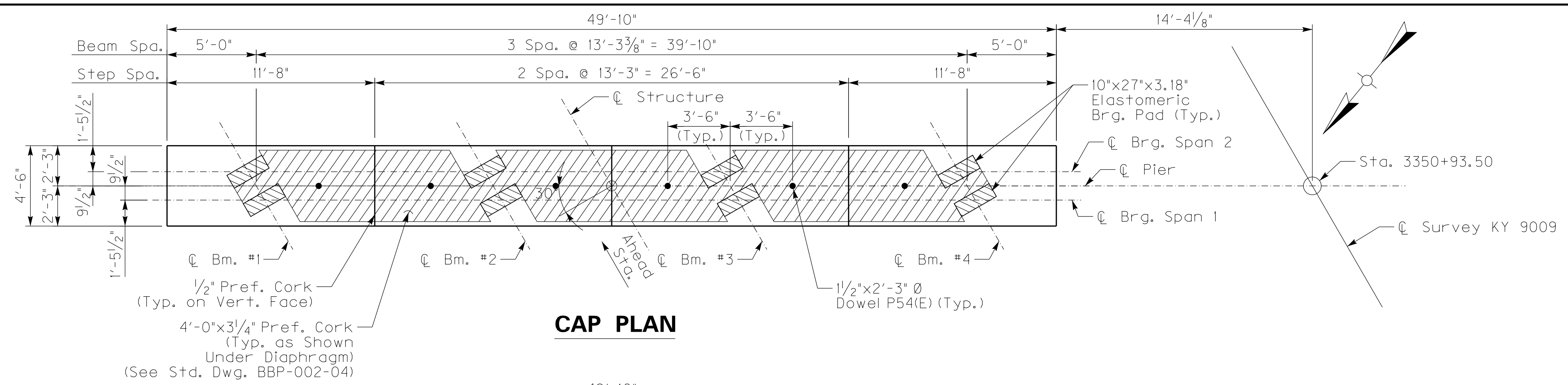
Rachel Mills, P.E.
Director
Division of Construction Procurement

RM:ks
Enclosures

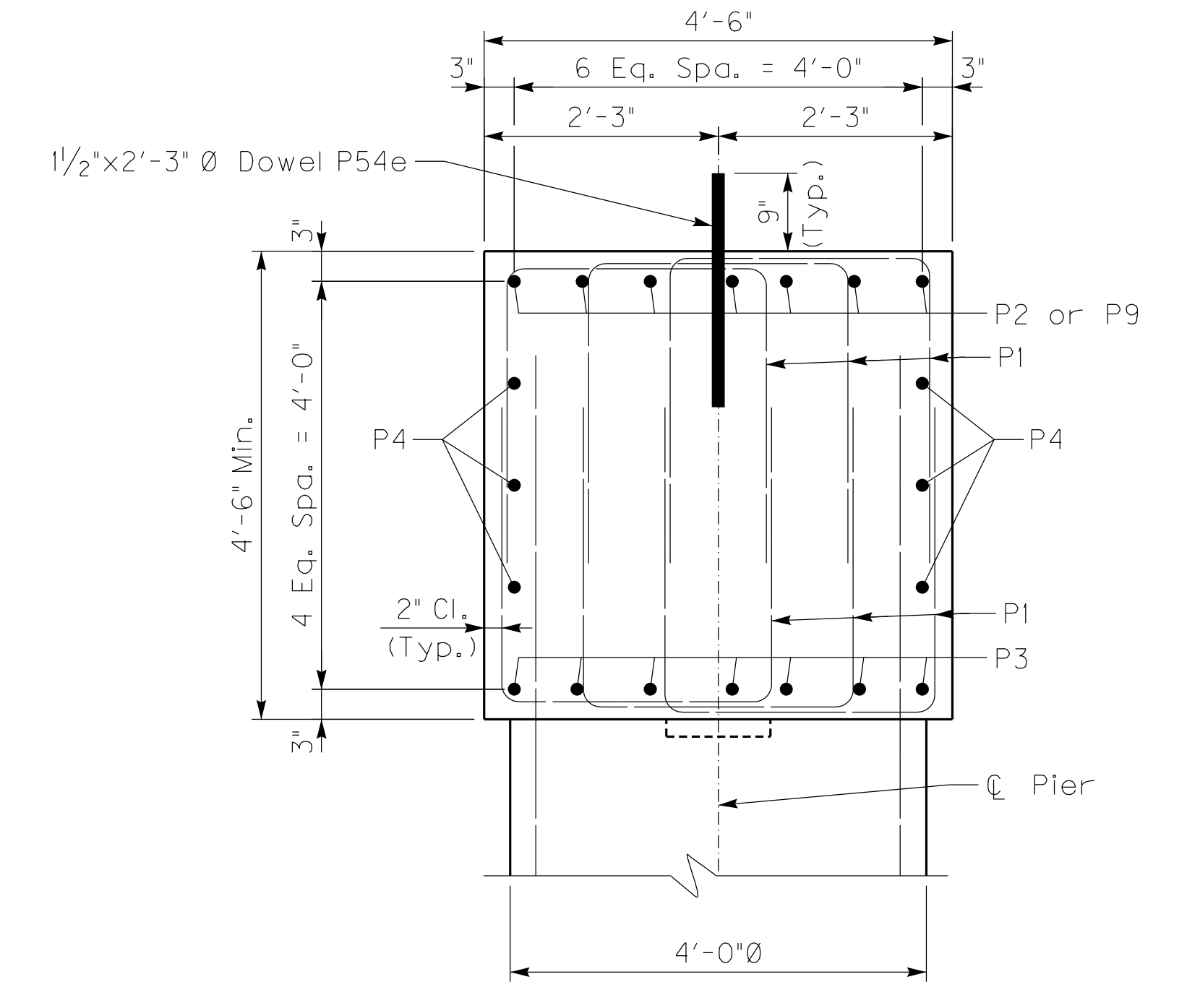
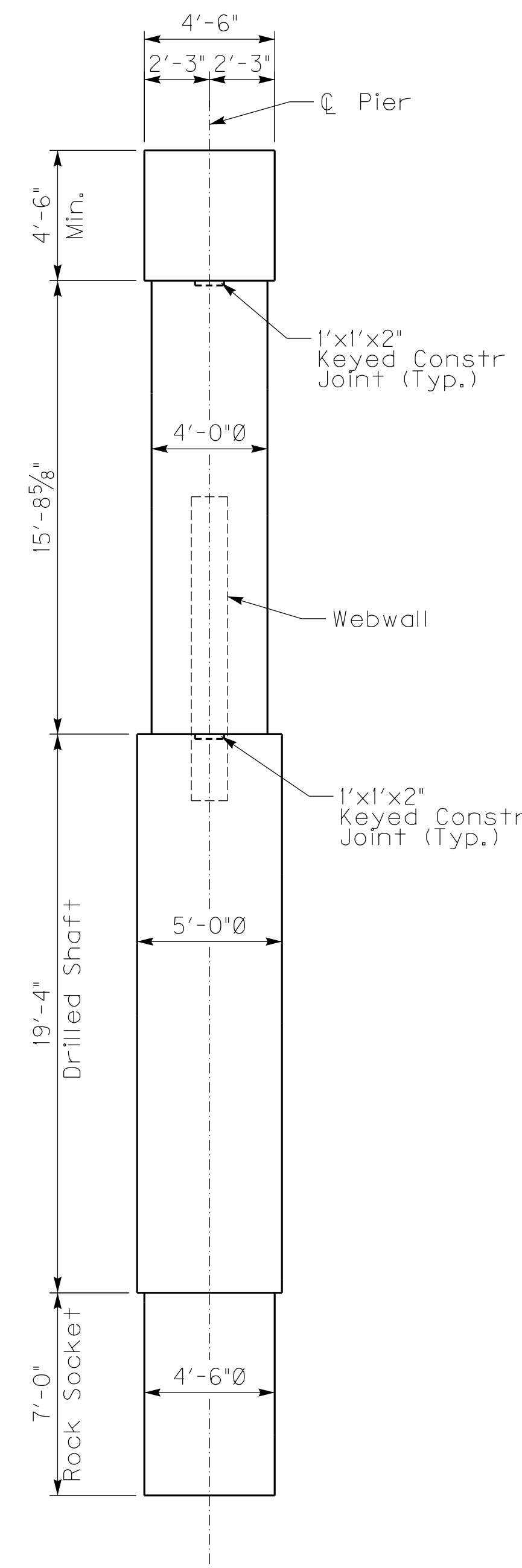
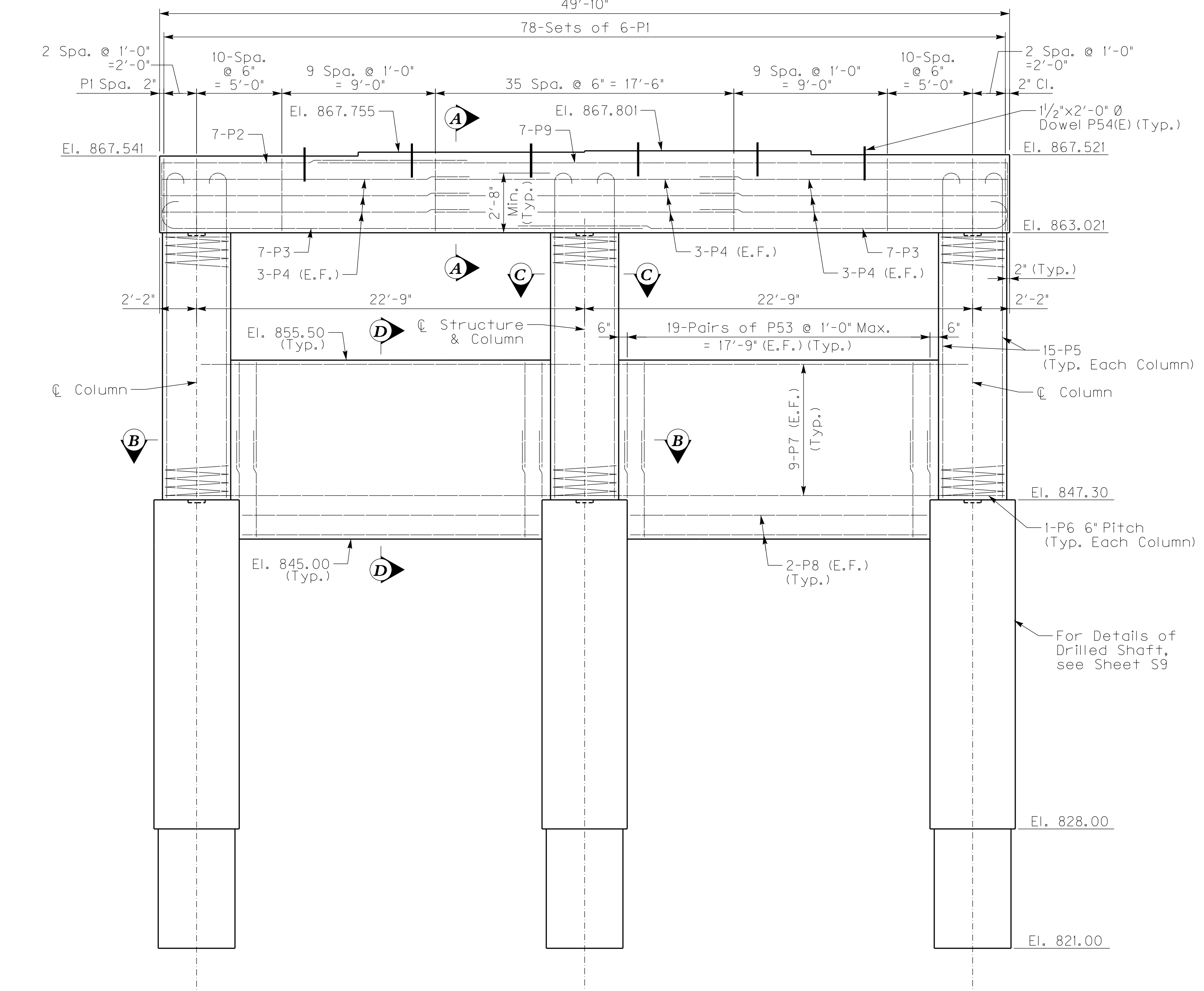


An Equal Opportunity Employer M/F/D

FILE NAME: 0:\PROJECTS\KY\KYTC\15009208 KYTC MTN PKWY - EA PARTNERS\CADD\STRUCTURE\LONG BRANCH PIER 1 DETAILS WB-01.DGN
 USER: dove.baker
 DATE PLOTTED: April 7, 2016
 E-SHEET NAME:
 MicroStation v8.11.7.443



~~PRELIMINARY
NOT FOR CONSTRUCTION~~



MIN. LAP TABLE

BAR SIZE	LENGTH
#5	2'-6"
#6	2'-10"
#10	7'-10"
#11	9'-3"

REVISED 12-01-2016

REVISION	DATE

DATE: 08/05/2016
 DESIGNED BY: A. OLSON
 CHECKED BY: C. BERES
 DETAILED BY: D. BAKER

Commonwealth of Kentucky
DEPARTMENT OF HIGHWAYS
 COUNTY
MAGOFFIN
 ROUTE
KY 9009 CROSSING
LONG BRANCH JOHNSON CREEK ROAD
WESTBOUND PIER 1 DETAILS

ITEM NUMBER
10-126.50

PREPARED BY
AECOM
 500 West Jefferson Street
 Suite 1600
 Louisville, KY 40202-4251
 www.aecom.com

SHEET NO.
S14
 DRAWING NO.
27569